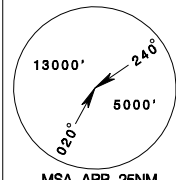
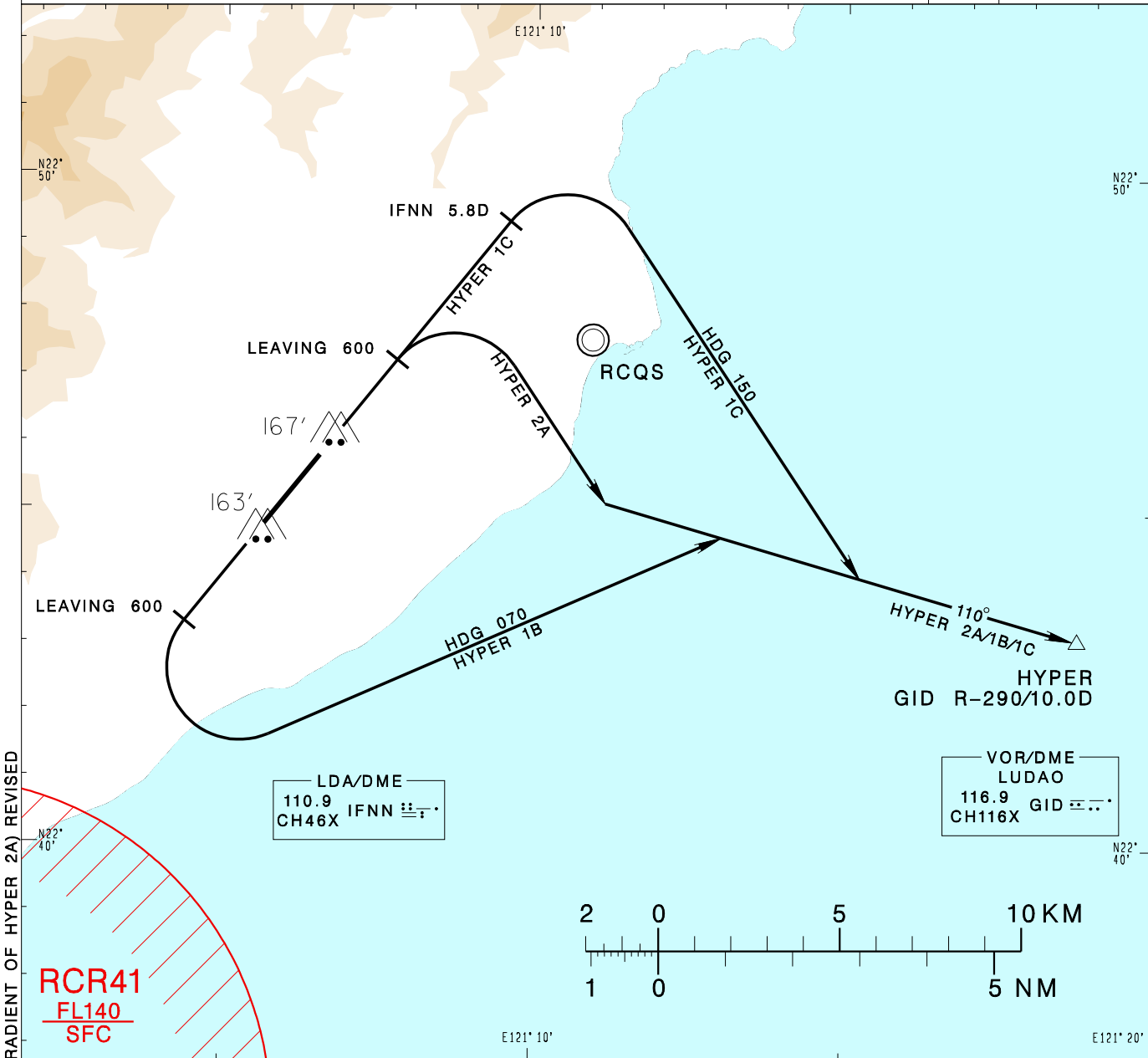


**臺東/豐年機場**  
TAITUNG/FONGNIAN AD

RCFN SID  
HYPER 2A (RWY04)  
HYPER 1C (RWY04)  
HYPER 1B (RWY22)

KAOHSIUNG APP 119.4 228.2	FONGNIAN TWR 118.1 236.6	ATIS 127.0	VAR 4°W-2023 
Apt Elev: 143'	Trans Level: FL130	Trans Alt: 11,000'	
BEARINGS ARE MAGNETIC; DISTANCES ARE NAUTICAL MILES; ELEVATIONS, HEIGHTS IN FEET			



CHANGES: NOTE 2 (REQUIRED CLIMB GRADIENT OF HYPER 2A) REVISED

**HYPER TWO ALFA DEPARTURE**  
Depart RWY HDG until 600ft, turn right to track GID R-290 to HYPER to join V12 transition.

**HYPER ONE BRAVO DEPARTURE**  
Depart RWY HDG until 600ft, turn left HDG 070 to track GID R-290 to HYPER to join V12 transition.

**HYPER ONE CHARLIE DEPARTURE**  
Depart RWY HDG until IFNN 5.8D, turn right HDG 150 to track GID R-290 to HYPER to join V12 transition.

**NOTE**

- HYPER 2A and HYPER 1B ONLY FOR CAT A and CAT B aircrafts.
- HYPER 2A: Requires a minimum climb gradient of 5%(304 ft/NM) until 2000ft.
- HYPER 1C: Requires a minimum climb gradient of 6.6%(400 ft/NM) until 2000ft. Max 200kt IAS before track GID R-290.
- Caution close-in obstacles (trees & poles): 167ft MSL, 96m northeast of RWY22 THR & 163ft MSL, 69m south of RWY04 THR.
- High terrain around the airport.